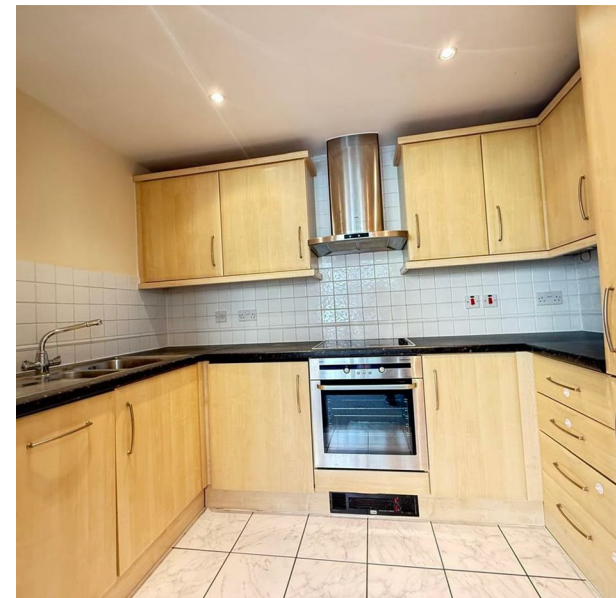


Flat 4, 290 Boardwalk Place, London, E14 5GD
£2,450 PCM
Council Tax Band: E

RELM
ESTATES



Welcome to Boardwalk Place – an exclusive Dockside development offering waterside living in the heart of Canary Wharf. This beautifully presented two-bedroom, two-bathroom apartment is now available for rent and comes complete with private parking and serene marina views.

The apartment features a spacious open-plan living and dining area, filled with natural light and seamlessly flowing onto a private balcony – the perfect spot to unwind and take in the calming water views. The modern kitchen is fully fitted with integrated appliances and finished to a high standard, ideal for entertaining or quiet evenings at home.

The master bedroom includes a sleek en-suite bathroom, while the second double bedroom is equally generous and served by a stylish main bathroom. Both rooms offer ample storage and a peaceful ambience.

Enjoy the benefits of a dedicated concierge service, beautifully maintained communal areas, and a superb location. Just a short stroll to Canary Wharf’s vibrant business district, Canada Square shopping, bars,



465 Leabridge Road
Leyton
London
E10 7EA
02081 438 248
lettings@relmestates.co.uk

